



INDOFINE Chemical Company, Inc.

121 Stryker Lane, Bldg. 30, Suite 1 • Hillsborough, NJ 08844 • U.S.A.

Phone: (908) 359-6778 • FAX: (908) 359-1179

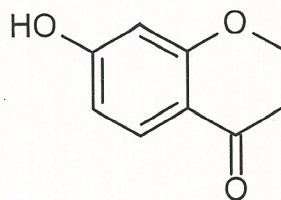
website: www.indofinechemical.com

e-mail: chemical@indofinechemical.com

CERTIFICATE OF ANALYSIS

Cat No.: 19-869

<u>Product:</u>	7-HYDROXYCHROMANONE
<u>Lot Number:</u>	0507062
<u>Chemical Formula:</u>	C ₉ H ₈ O ₃
<u>Molecular Weight:</u>	164.16
<u>Melting Point:</u>	143-145°C
<u>Appearance:</u>	Light pink powder
<u>Solubility:</u>	Soluble in Ethyl acetate
<u>TLC:</u>	Benzene:Methanol (9.6:0.4)
<u>NMR Spectrum:</u>	Enclosed
<u>IR Spectrum:</u>	Enclosed
<u>Storage:</u>	Cool dry place
<u>Purity(HPLC):</u>	99+%





INDOFINE Chemical Company, Inc.

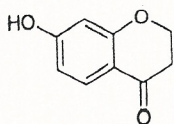
121 Stryker Lane, Bldg. 30, Suite 1 • Hillsborough, NJ 08844 • U.S.A.

Phone: (908) 359-6778 • FAX: (908) 359-1179

website: www.indofinechemical.com

e-mail: chemical@indofinechemical.com

HPLC ANALYSIS



Catalog no.: 19-869

Product name: 7-Hydroxychromanone

Lot No.: 0507062

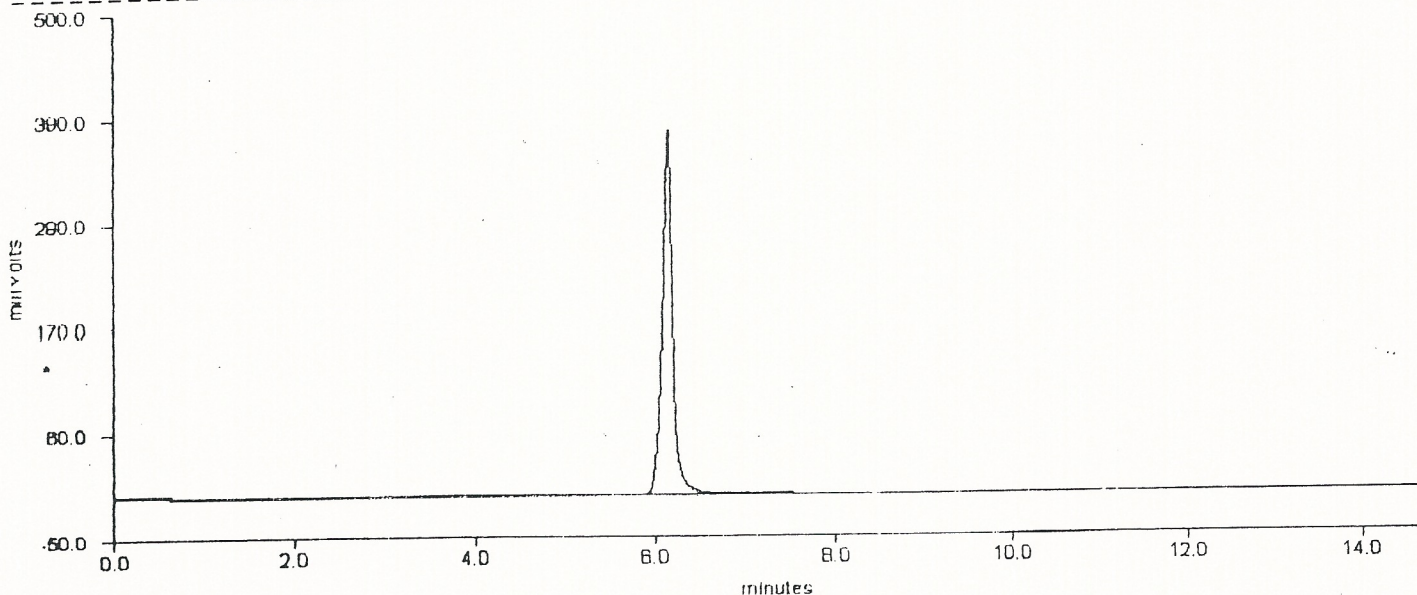
MOBILE PHASE :METHANOL, COLUMN ;C18(250mmx4.6mm),

FLOW RATE :1ml/min, WAVE LENGTH :254nm

DELTA CHROMATOGRAPHY DATA SYSTEM

STRIPCHART PLOT FOR CHROMATOGRAM - c:\deltaw\data\np0195.raw

=====



DELTA CHROMATOGRAPHY DATA SYSTEM

LISTING PEAK TABLE FOR CHROMATOGRAM - c:\deltaw\data\np0195.raw.RAW

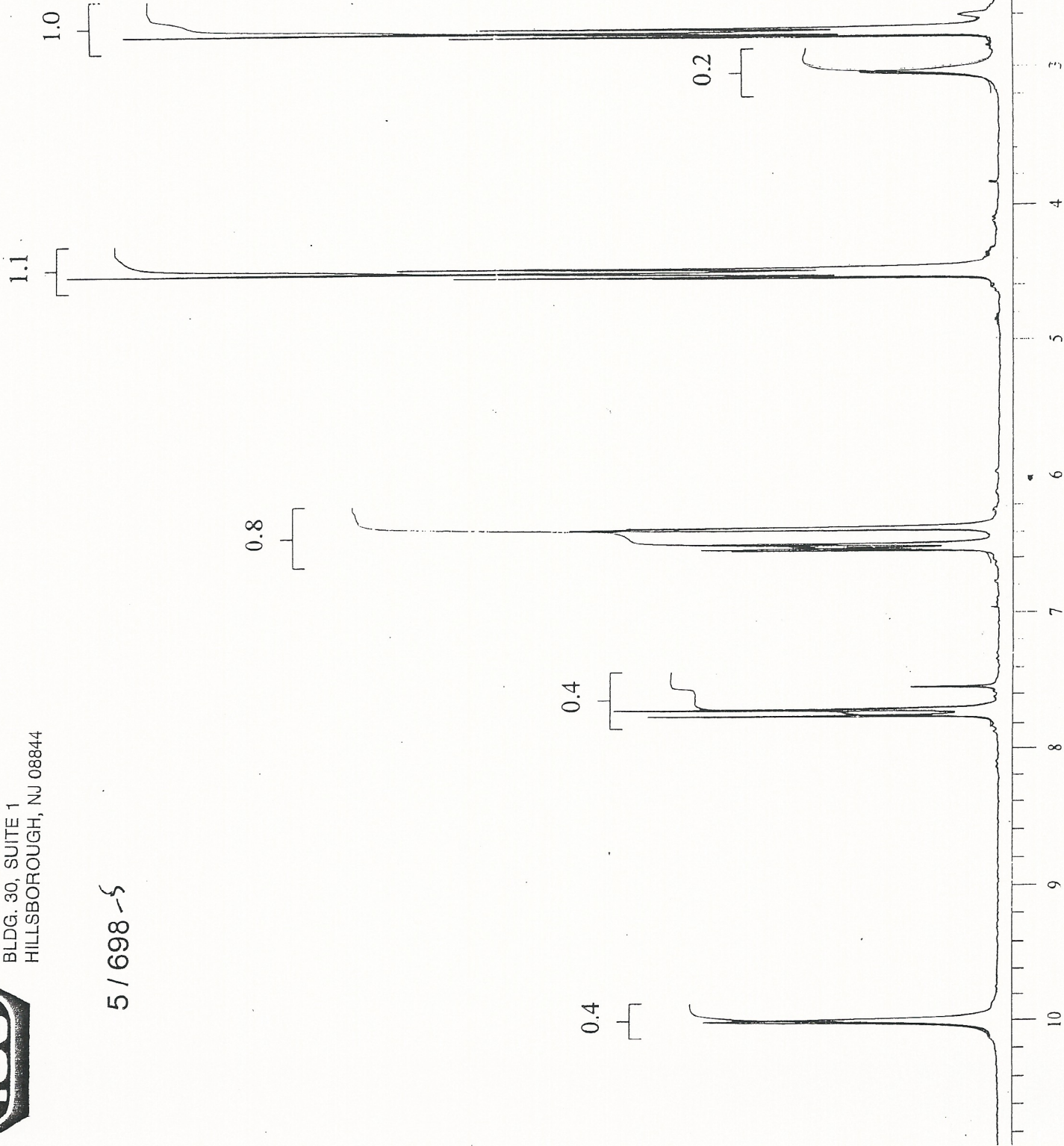
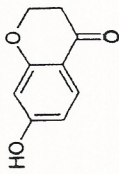
=====

#	Type Name	Ret.Time	Area(uVSec)	Height(mV)	Area Percent
1	VB	5.30	1977	0.4	0.1
2	BP	5.76	1720	0.2	0.1
3	PB	6.14	2986216	381.6	99.6
4	MM	10.21	8023	1.8	0.3



INDOFINE Chemical Company, Inc.
121 STRYKER LANE
BLDG. 30, SUITE 1
HILLSBOROUGH, NJ 08844

Catalog no.: 19-869
Product name: 7-Hydroxychromanone
Lot No.: 0507062

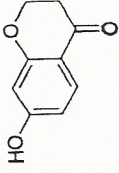


5 / 698 -5

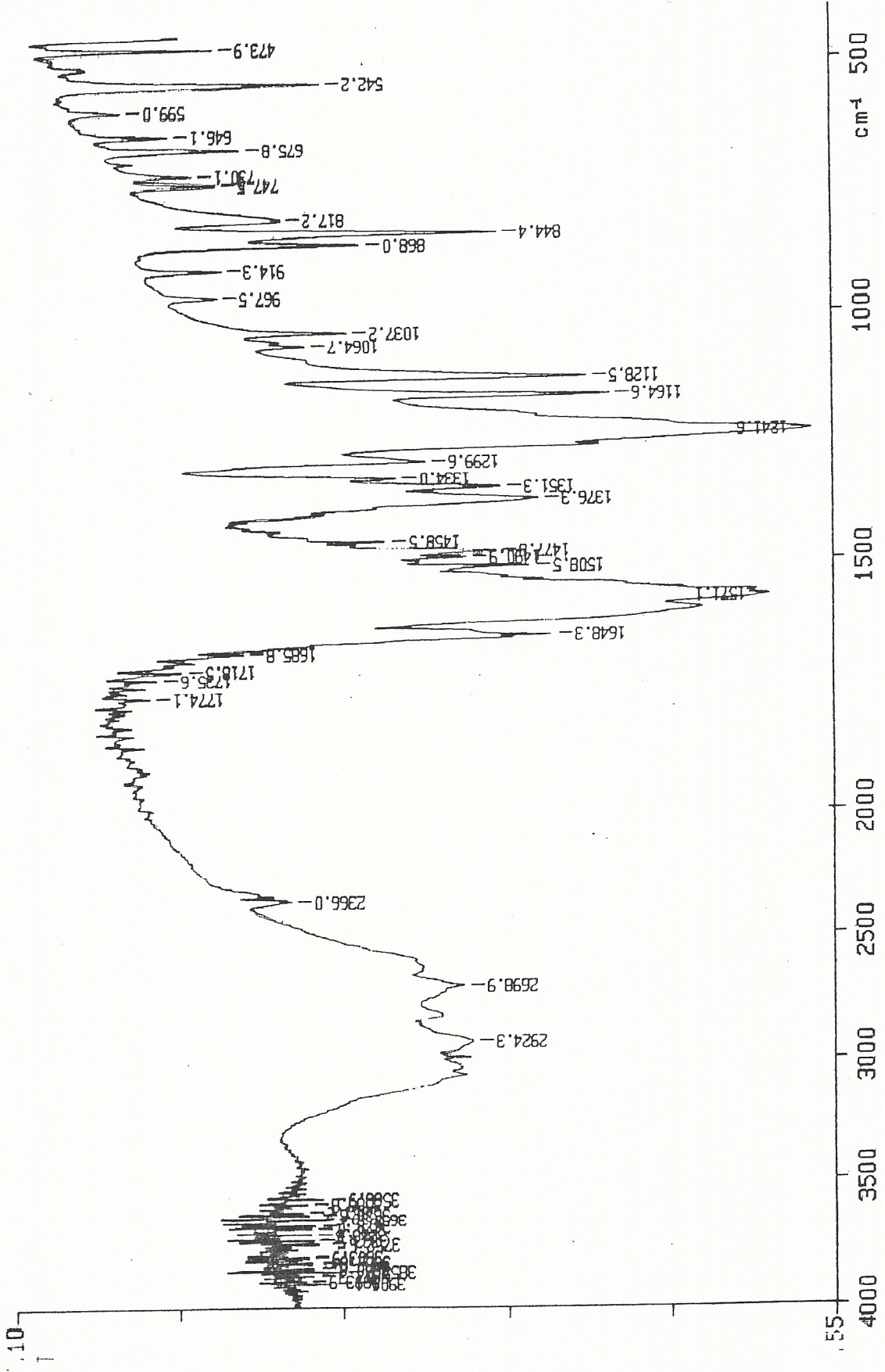


INDOFINE Chemical Company, Inc.
121 STRYKER LANE
BLDG. 30, SUITE 1
HILLSBOROUGH, NJ 08844

Catalog no.: 19-869
Product name: 7-Hydroxychromanone
Lot No.: 0507062



PERMUT



: 1 scan, 4.0cm⁻¹